

Subject: Update on the draft all age carers strategy and delivery plan 2023-2026

Executive Summary

The draft all age carers strategy has been out for consultation for the last 3 months, with wide distribution, including arts and events organised by Wiltshire Council and the voluntary sector. This strategy will inform the operational delivery of statutory organisations, as well as the commissioning of services going forward, and the way in which we measure the impact of our carers support services. Our strategy and delivery plan is crucial to us improving our outcomes for carers in Wiltshire.

Our current performance

Table 1 shows Wiltshire as midtable within the Southwest for carer satisfaction for young adults and working age and older adults. Our average scores are under 50% and we aspire to at least 80% , which has been achieved in other areas of the UK.

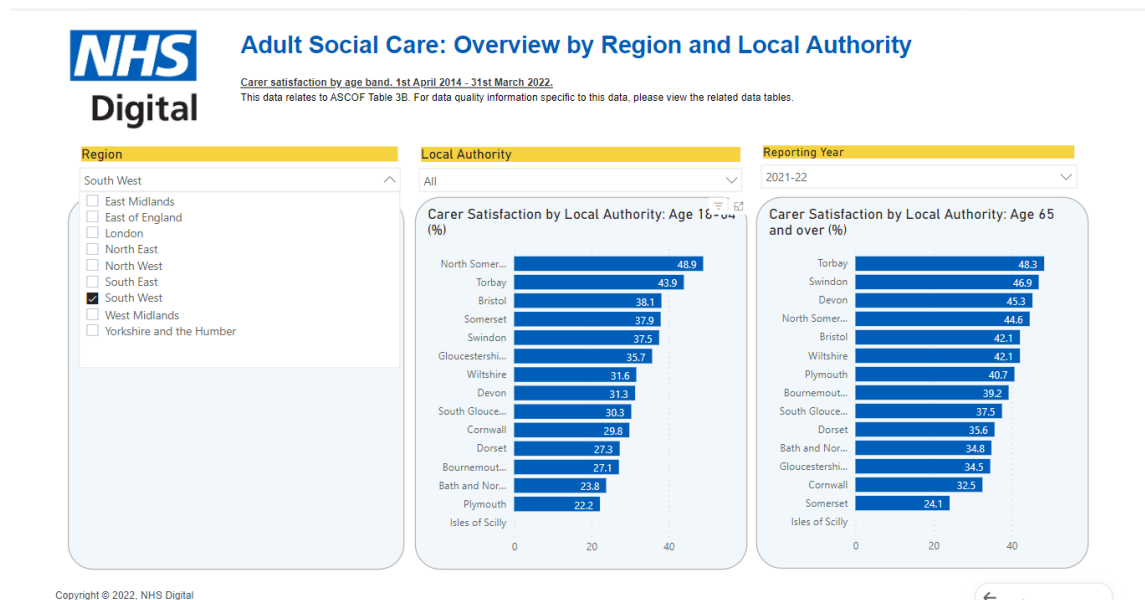


Table 1

Table 2 benchmarks Wiltshire young adults and working age and older adults reporting as having much poorer outcomes with regards to enough social contact as other parts of the south west by a substantial margin.

**Adult Social Care: Overview by Region and Local Authority**

Carer social contact by age band, 1st April 2014 - 31st March 2022.  
This data relates to ASCOF Table 11(2). For data quality information specific to this data, please view the related data tables.

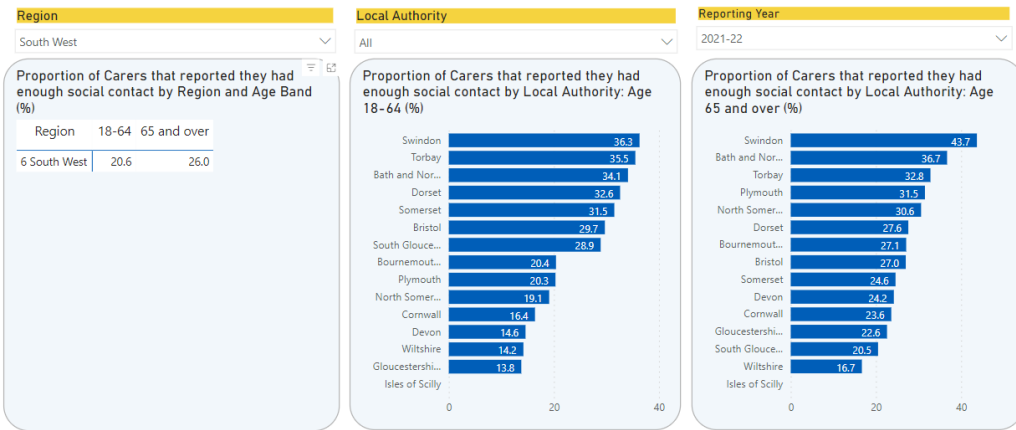


Table 2

Wiltshire benchmarked on quality of life for carers shows the lowest score in the South west for young adult carers, working age and older carers.

**Adult Social Care: Overview by Region and Local Authority**

Carer quality of life score by age band, 1st April 2014 - 31st March 2022.  
This data relates to ASCOF Table 1B. For data quality information specific to this data, please view the related data tables.

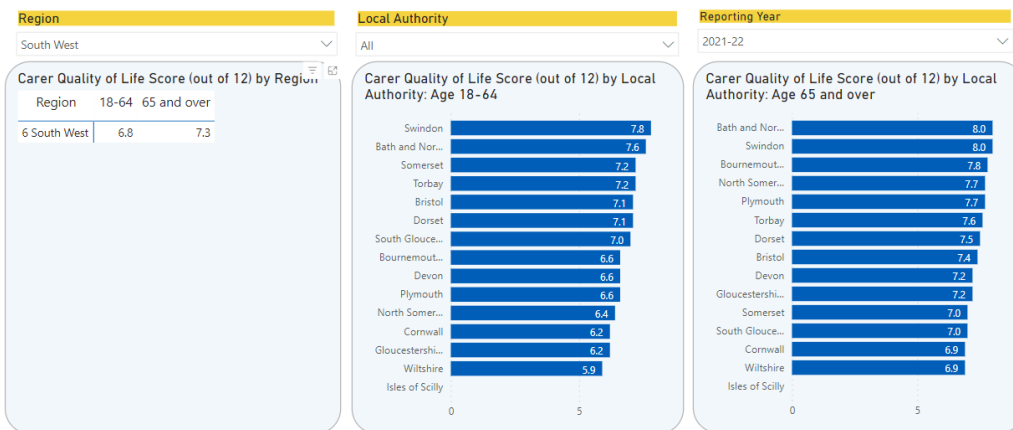


Table 3

We do not have a national benchmark to measure ourselves against for young carers. We will implement new measures using our baseline data from the JSNA for young carers and will support this with audits and data gathering across partner organisations to ensure all our services, Local Authority, NHS and commissioned are having a positive impact on young carers lives. The outcomes below are from our joint strategic needs assessment:

- Young carers at primary school are less likely to feel safe at home than their peers, and young carers are least likely to feel safe from crime.
- 36% of secondary school age young carers have either been a victim of domestic abuse or violence themselves or witnessed a family member being a victim.

- 33% of primary age young carers and 42% of secondary age young carers have spent money on gambling.
- Less than two thirds of primary school age young carers and less than one third of secondary school age young carers feel confident about their future. Half of young carers have felt so worried, they cannot sleep at night.
- More than a third of young carers in Year 12 and above have self-harmed – the highest proportion in this age group.
- Amongst primary school pupils, young carers are the least likely to eat breakfast and have 5 or more portions of fruit and vegetables per day.

We are drafting an implementation plan for the strategy which includes:

- Responsibilities for Wiltshire Council, Primary Care, Acute Hospital Trusts.
- Guidance for communities, area boards, schools and workplaces
- Service specifications for commissioned providers for online support, adults' provision and young carers provision as separate lots.
- Lead commissioner for all age carers
- New monitoring standards and regular reports to key Statutory Boards

Comments have been received and collated for the strategy, and a final draft has been created and is attached for approval.

### **Proposal(s)**

It is recommended that the Board:

- i) Approves the final draft strategy.

### **Reason for Proposal**

### **Approval of the strategy**

**Melanie Nicolaou**  
**Head of adults and resources commissioning**  
Wiltshire Council

---